



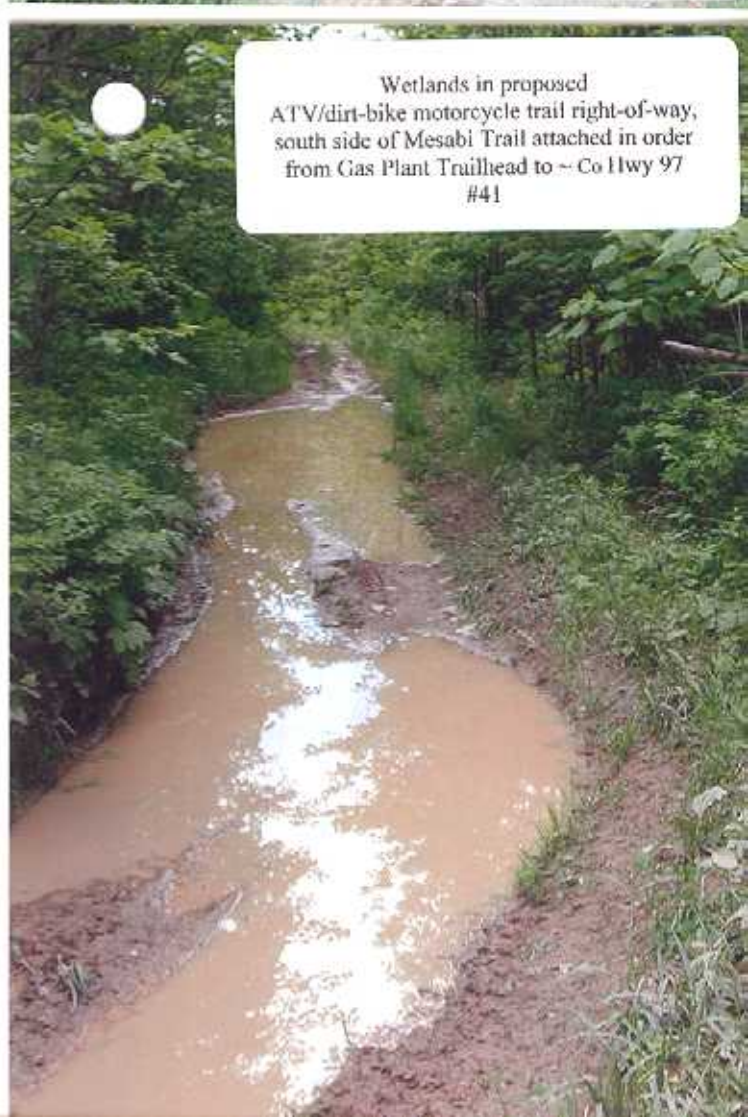
- Location of fiveleth end of proposed new
ATV/Dirt-bike motorcycle trail construction -
"Gas Plant" Parking Lot Trailhead on MN Hwy 37 E, East of
U.S. Hwy 53.
Attached photo documentation of proximity of proposed
flagged trail begins here on
"south" side of Mesabi Trail and is provided in order from
West to East to - Co. Hwy 97
#25



ATV damage to pond
next to Mesabi Trail
near "Gas Plant" trailhead
39

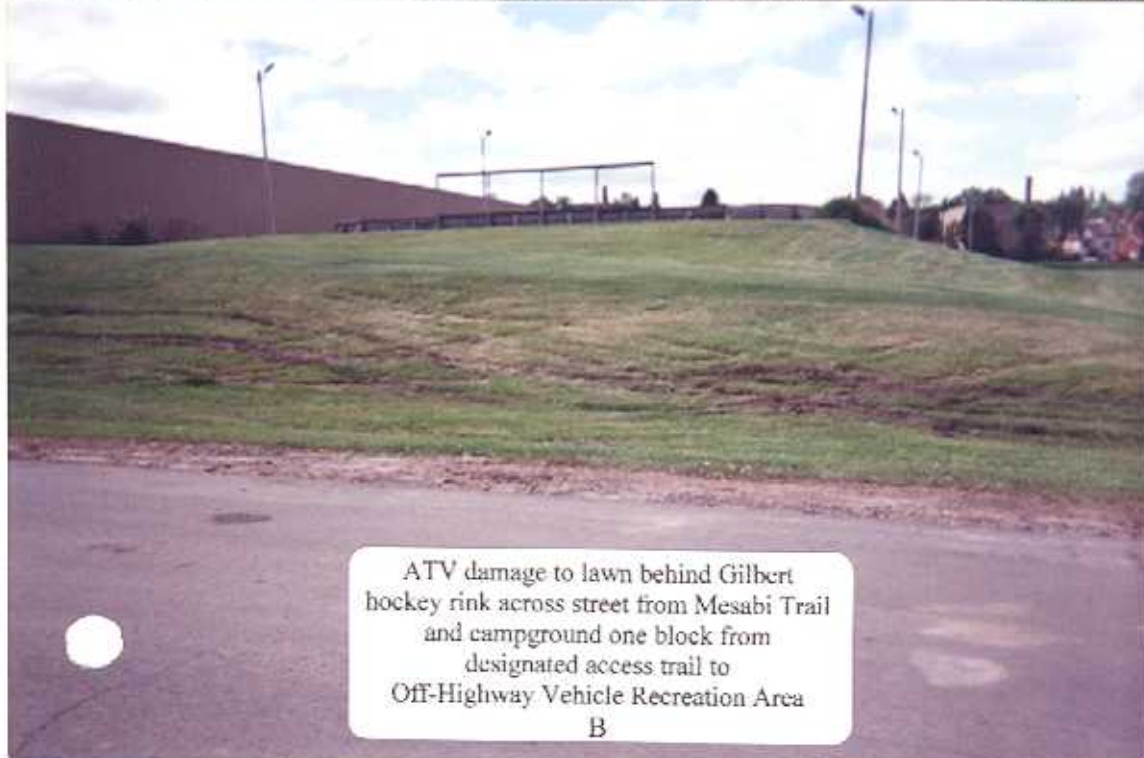


One of at least eight illegal user-made ATV
trail crossings of Mesabi Trail between Gas
Plant Trailhead and Co. Hwy 97 attached in
order from
West to East



Wetlands in proposed
ATV/dirt-bike motorcycle trail right-of-way,
south side of Mesabi Trail attached in order
from Gas Plant Trailhead to ~ Co Hwy 97
#41

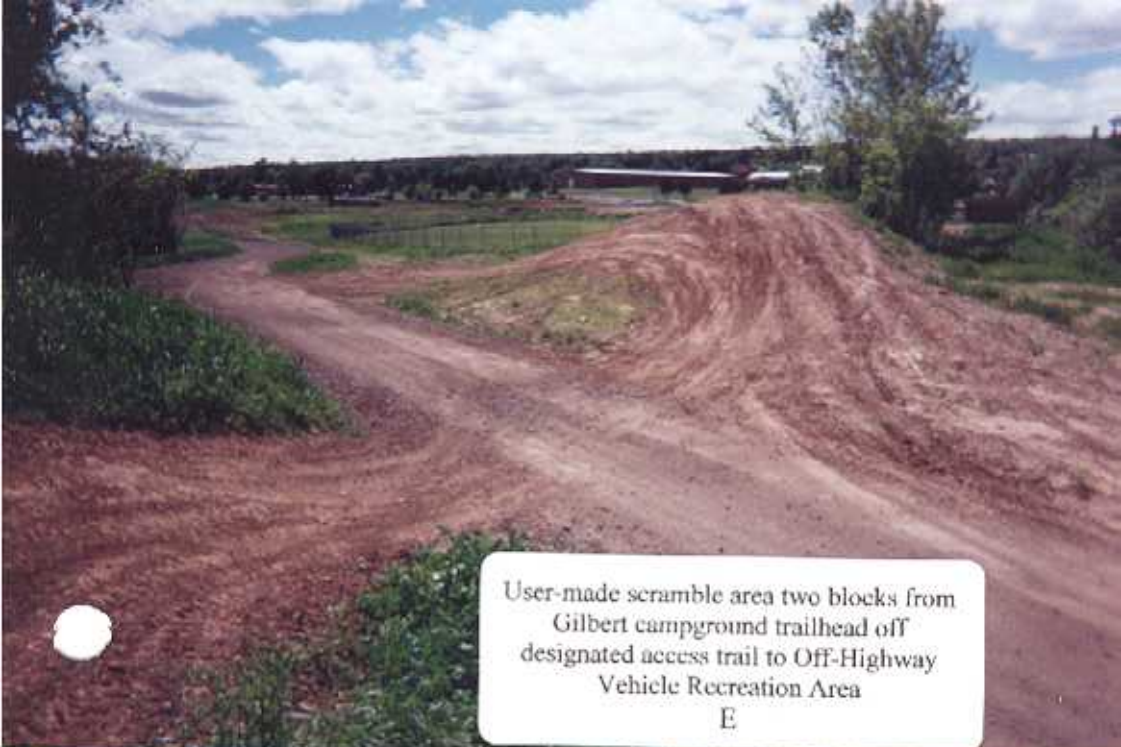
Continuous illegal ATV use of
designated snowmobile trail
adjacent to north side of
Mesabi Trail
#50



ATV damage to lawn behind Gilbert
hockey rink across street from Mesabi Trail
and campground one block from
designated access trail to
Off-Highway Vehicle Recreation Area
B



Extensive damage to user-made
ATV trail leading to
Gilbert campground



User-made scramble area two blocks from
Gilbert campground trailhead off
designated access trail to Off-Highway
Vehicle Recreation Area
E

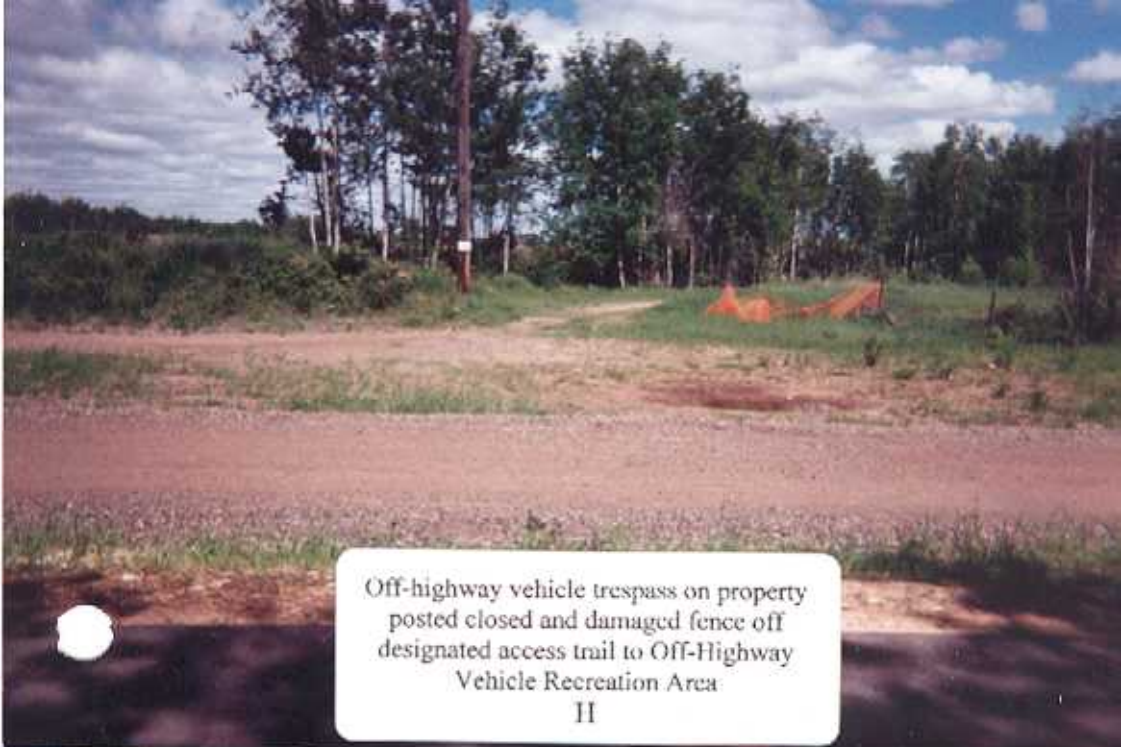


ATV ruts around newly installed fire hydrant
three blocks from Gilbert campground
trailhead off designated access trail to
Off-Highway Vehicle Recreation Area
F

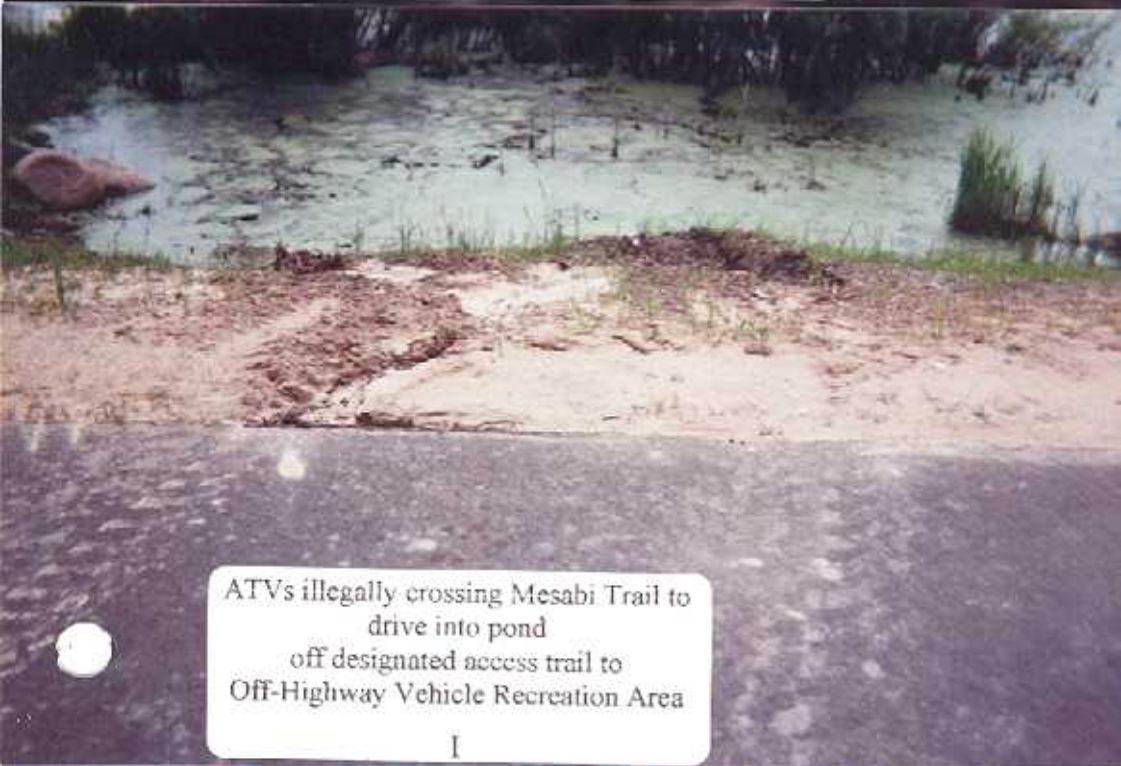


ATV ruts where ATVs are driving
into pond off designated access trail
to Off-Highway Recreation Area

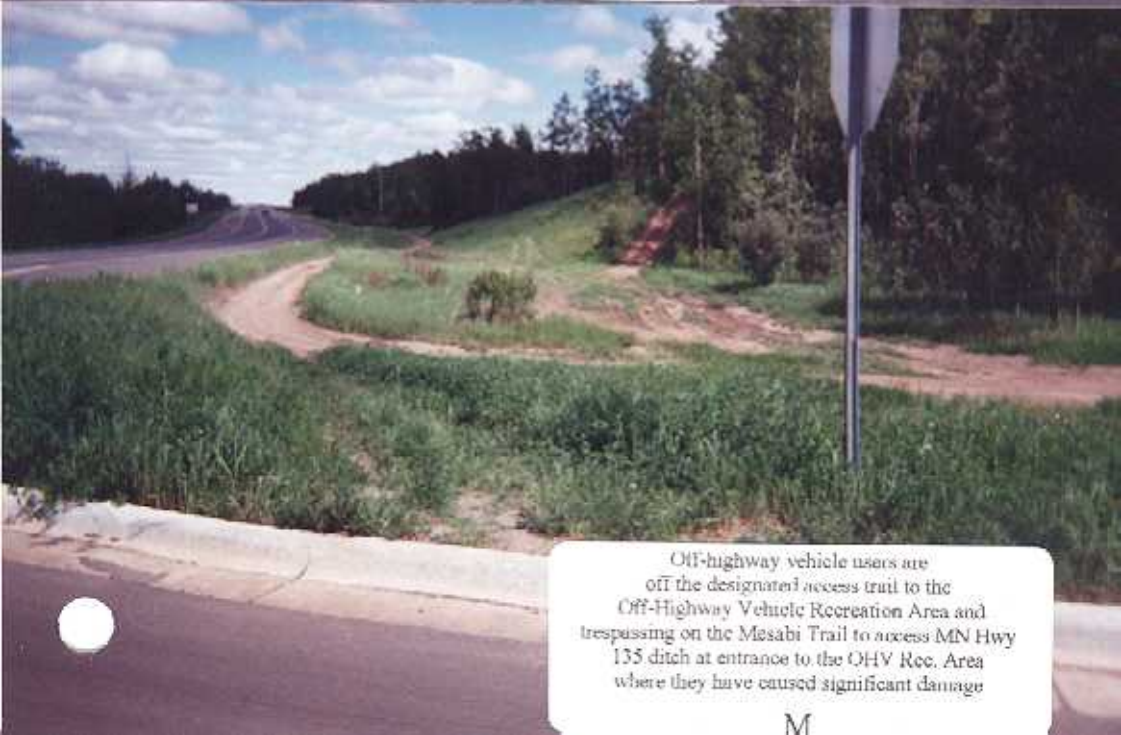
G



Off-highway vehicle trespass on property posted closed and damaged fence off designated access trail to Off-Highway Vehicle Recreation Area
II



ATVs illegally crossing Mesabi Trail to drive into pond off designated access trail to Off-Highway Vehicle Recreation Area
I



Off-highway vehicle users are off the designated access trail to the Off-Highway Vehicle Recreation Area and trespassing on the Mesabi Trail to access MN Hwy 135 ditch at entrance to the OHV Rec. Area where they have caused significant damage
M